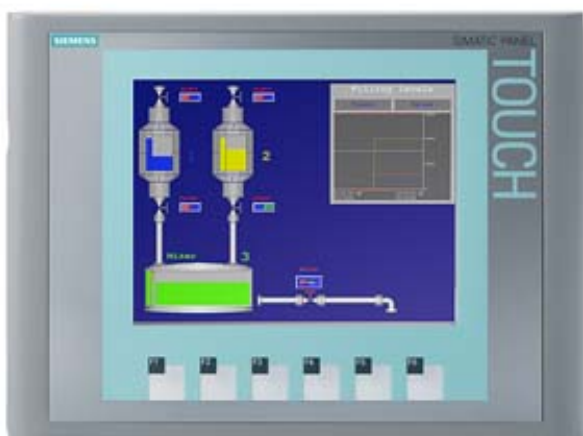


SIMATIC HMI KTP600 BASIC COLOR PN,
 BASIC PANEL, KEY AND TOUCH OPERATION,
 6" TFT DISPLAY, 256 COLORS,
 PROFINET INTERFACE,
 CONFIGURATION FROM WINCC FLEXIBLE 2008 SP2
 COMPACT/ WINCC BASIC V10.5/ STEP7 BASIC V10.5,
 CONTAINS OPEN SOURCE SW WHICH IS PROVIDED
 FREE OF CHARGE FOR DETAILS SEE CD



Display	
Design of display	TFT
Screen diagonal	5.7 in
Display width	115.2 mm
Display height	86.4 mm
Number of colors	256
Resolution (pixels)	
horizontal image resolution	320
vertical image resolution	240
Backlighting	
MTBF backlighting (at 25 °C)	50000 h
Backlight dimmable	No
Control elements	
Keyboard fonts	
Number of function keys	6
Keys with LED	No
System keys	No
Numeric/alphabetical input	
Numeric keyboard	Yes ; Onscreen keyboard

alphanumeric keyboard	Yes ; Onscreen keyboard
Touch operation	
Design as touch screen	Yes
Installation type/mounting	
Mounting in portrait format possible	Yes
Mounting in landscape format possible	Yes
Supply voltage	
Type of supply voltage	DC
Rated value (DC)	24 V
permissible range, lower limit (DC)	19.2 V
permissible range, upper limit (DC)	28.8 V
Input current	
Current consumption (rated value)	0.35 A
Inrush current A ² s	0.5 A ² s
Power	
Power consumption, typ.	9 W
Processor	
Processor type	
X86	No
ARM	Yes ; RISC 32-bit
Memory	
Flash	Yes
RAM	Yes
usable memory for user data	1 Mbyte
Type of output	
Acoustics	
Buzzer	Yes
Speaker	No
Time of day	
Clock	
Hardware clock (real-time clock)	No
Software clock	Yes
battery-backed	No
synchronizable	Yes
Interfaces	
Number of RS 485 interfaces	0
Number of USB interfaces	0
Number of SD card slots	0

Number of parallel interfaces	0
Number of 20 mA interfaces (TTY)	0
Number of RS 232 interfaces	0
Number of RS 422 interfaces	0
Number of other interfaces	0
With software interfaces	No
Industrial Ethernet	
Number of industrial Ethernet interfaces	1
Industrial Ethernet status LED	2
Protocols	
PROFINET	Yes
PROFINET IO	No
IRT, supported	No
PROFIBUS	No
MPI	No
Protocols (Ethernet)	
TCP/IP	Yes
DHCP	Yes
SNMP	Yes
DCP	Yes
LLDP	Yes
WEB characteristics	
HTTP	No
HTML	No
Further protocols	
CAN	No
MODBUS	Yes ; Modicon (MODBUS TCP/IP)
EtherNet/IP	Yes
Interrupts/diagnostics/status information	
Diagnostic messages	
Diagnostic information readable	No
Degree and class of protection	
IP (at the front)	IP65
Enclosure Type 4 at the front	Yes
Enclosure Type 4x at the front	Yes
IP (rear)	IP20
Standards, approvals, certificates	
CE mark	Yes

KC approval	Yes
cULus	Yes
RCM (former C-TICK)	Yes
Marine approval	
Germanischer Lloyd (GL)	Yes
American Bureau of Shipping (ABS)	Yes
Bureau Veritas (BV)	Yes
Det Norske Veritas (DNV)	Yes
Lloyds Register of Shipping (LRS)	Yes
Nippon Kaiji Kyokai (Class NK)	Yes
Polski Rejestr Statkow (PRS)	Yes
Use in hazardous areas	
ATEX Zone 2	No
ATEX Zone 22	No
cULus Class I Zone 1	No
cULus Class I Zone 2, Division 2	No
FM Class I Division 2	No
Ambient conditions	
Mounting position	vertical
maximum permissible angle of inclination without external ventilation	35 °
Operating temperature	
Operation (vertical installation)	
in vertical mounting position, minimum	0 °C
in vertical mounting position, maximum	50 °C
Operation (max. tilt angle)	
at maximum tilt angle, minimum	0 °C
at maximum tilt angle, maximum	40 °C
Operation (vertical installation, portrait format)	
in vertical mounting position, minimum	0 °C
in vertical mounting position, maximum	50 °C
Operation (max. tilt angle, portrait format)	
at maximum tilt angle, minimum	0 °C
at maximum tilt angle, maximum	40 °C
Storage/transport temperature	
min.	-30 °C
max.	60 °C
Relative humidity	
Operation, max.	90 %

Operating systems	
Windows CE	No
proprietary	Yes
Executable with configuration operating system	
other	No
Configuration	
Message indicator	Yes
With alarm logging system (incl. buffer and acknowledgment)	Yes
Process value display (output)	Yes
Process value default (input) possible	Yes
Recipe administration	Yes
Configuration software	
STEP 7 Basic (TIA Portal)	Yes ; via integrated WinCC Basic (TIA Portal)
STEP 7 Professional (TIA Portal)	Yes ; via integrated WinCC Basic (TIA Portal)
WinCC flexible Compact	Yes
WinCC flexible Standard	Yes
WinCC flexible Advanced	Yes
WinCC Basic (TIA Portal)	Yes
WinCC Comfort (TIA Portal)	Yes
WinCC Advanced (TIA Portal)	Yes
WinCC Professional (TIA Portal)	Yes
Languages	
Online languages	
Number of online/runtime languages	5
Project languages	
Languages per project	32
Project languages	
D	Yes
GB	Yes
F	Yes
I	Yes
E	Yes
Chinese traditional	Yes
Chinese simplified	Yes
DK	Yes
FIN	Yes
GR	Yes
J	Yes

KP/ROK	Yes
NL	Yes
N	Yes
PL	Yes
P	Yes
RUS	Yes
S	Yes
CZ	Yes
SK	Yes
TR	Yes
H	Yes
Functionality under WinCC (TIA Portal)	
Libraries	Yes
Task planner	
time-controlled	No
task-controlled	Yes
Help system	
Number of characters per info text	320
Message system	
Number of alarm classes	32
Number of bit messages	200
Number of analog messages	15
System messages HMI	Yes
Number of characters per message	80
Number of process values per message	8
Message indicator	Yes
Message buffer	
Number of entries	256
Circulating buffer	Yes
retentive	Yes
maintenance-free	Yes
Recipe administration	
Number of recipes	5
Data records per recipe	20
Entries per data record	20
Size of internal recipe memory	40 kbyte
Recipe memory expandable	No
Variables	
Number of variables per device	500

Number of variables per screen	30
Limit values	Yes
Multiplexing	Yes
Structures	No
Arrays	Yes
Images	
Number of configurable images	50
Permanent window/default	Yes
Global image	Yes
Start screen configurable	Yes
Image selection by PLC	Yes
Image number in the PLC	Yes
Image objects	
Number of objects per image	30
Text fields	Yes
I/O fields	Yes
Graphic I/O fields (graphics list)	Yes
symbolic I/O fields (text list)	Yes
Date/time fields	Yes
Switch	Yes
Buttons	Yes
Graphic display	Yes
Icons	Yes
geometric objects	Yes
Complex image objects	
Number of complex objects per screen	5
Alarm view	Yes
Trend view	Yes
User view	Yes
Status/control	No
Sm@rtClient view	No
Recipe view	Yes
f(x) trend view	No
System diagnostics view	No
Media Player	No
Bar graphs	Yes
Sliders	No
Pointer instruments	No
Analog/digital clock	No

Lists	
Number of text lists per project	150
Number of entries per text list	30
Number of graphics lists per project	100
Number of entries per graphics list	30
Archiving	
Number of archives per device	0
Security	
Number of user groups	50
Number of user rights	32
Number of users	50
Password export/import	No
SIMATIC Logon	No
Character sets	
Keyboard fonts	
US English	Yes
Fonts	
Tahoma	Yes
Arial	No
Courier New	No
WinCC Standard	Yes
Ideographic languages	Yes
Font size freely scalable	No
additional character sets loadable	No
Transfer (upload/download)	
MPI/PROFIBUS DP	No
USB	No
Ethernet	Yes
using external storage medium	No
Process coupling	
S7-1200	Yes
S7-1500	Yes
S7-200	Yes
S7-300/400	Yes
LOGO!	Yes
WinAC	Yes
SINUMERIK	No
SIMOTION	No
Allen Bradley (EtherNet/IP)	Yes

Allen Bradley (DF1)	No
Mitsubishi (MC TCP/IP)	Yes
Mitsubishi (FX)	No
OMRON (FINS TCP)	No
OMRON (LINK/Multilink)	No
Modicon (Modbus TCP/IP)	Yes
Modicon (Modbus)	No
Service tools/configuration aids	
Clean screen	Yes
Touch calibration	Yes
Backup/Restore manually	Yes
Backup/Restore automatically	No
Simulation	Yes
Device switchover	Yes
Delta transfer	No
Peripherals/Options	
Peripherals	
Printer	No
Multimedia Card	No
SD card	No
USB memory	No
Mechanics/material	
Type of housing (front)	
Plastic	Yes
Aluminum	No
Stainless steel	No
Dimensions	
Width of the housing front	214 mm
Height of housing front	158 mm
Mounting cutout/device depth (W x H x D)	
Mounting cutout, width	197 mm
Mounting cutout, height	141 mm
Overall depth	44 mm
Weights	
Weight without packaging	1.07 kg
Weight incl. packaging	1.32 kg

Status

Jul 21, 2014