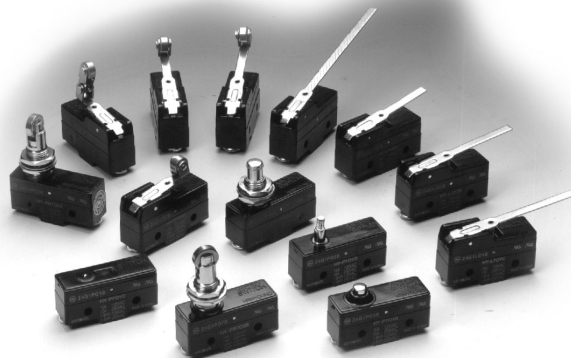


MICRO SWITCH



■ Suffix Code

Type	Shape	Model	Specification
Long button		HY-P701A (Z4G1P05B)	Manual operation with low speed CAM
Short button		HY-P701B (Z4G1P09B)	Wide diameter of PLUNGER
Pin button		HY-P701C (Z4G1P01B)	Suitable for short straight stroke and stopper required
Push button		HY-P701D (Z4G1P03B)	Power press on center
Short roller lever		HY-R704A (Z4G1L07B)	Suitable for CAM operation
Middle roller lever		HY-R704B	
Long roller lever		HY-R704C (Z4G1L03B)	
Two roller lever		HY-R704-2W	Operation for one side direction
Short lever		HY-L707A	Suitable for low speed CAM
Middle lever		HY-L707B	
Long lever		HY-L707C (Z4G1L01B)	
Special long lever		HY-L707D	
Roller button(Vertical)		HY-PR708A	Selectable roller face
Roller button(Horizontal)		HY-PR708B (Z4G1P07B)	



■ Ratings

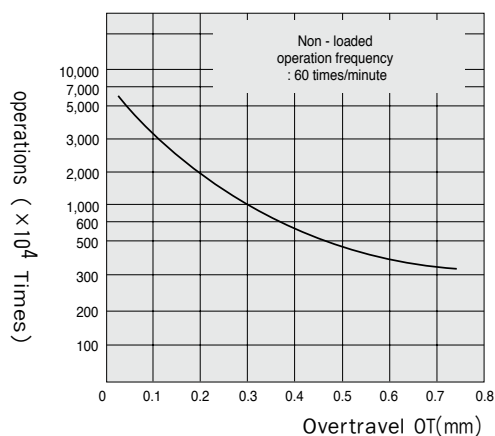
Voltage (V)	Non-Inductive load(A)		Inductive load(A)			
	Resistive load		Inductive load		Motor load	
	NC	NO	NC	NO	NC	NO
AC 125	15		10		3	1.5
AC 250	10		6		2	1
AC 600	3		2		1.5	0.75
DC 8	15		10		-	-
DC 14	15		10		-	-
DC 30	6		5		-	-
DC 125	0.4		0.05		-	-
DC 250	0.2		0.03		-	-

■ Specification

Operation speed		0.01~1m/s
Switching frequency	Mechanical	240 times / minute
	Electrical	20 times / minute
Insulation resistance		100MΩ Min. (at DC 500V)
Contact resistance		20MΩ Max. (Initial value), 100MΩ Max. (Test value)
Vibration		10~55Hz, Double amplitude 1.5 mm
Shock	Durability	1,000 $\frac{m}{s^2}$ Min. (100G Min.)
	Malfunction	300 $\frac{m}{s^2}$ Min. (30G Min.)
Dielectric strength	Current-carrying	AC 1,000V 1 minute (50~60Hz)
	noncurrent-carrying	AC 2,000V 1 minute (50~60Hz)
Life	Mechanical	1 million operations Min.
	Electrical	500,000 operations Min.
Weight		31.5~59.5g

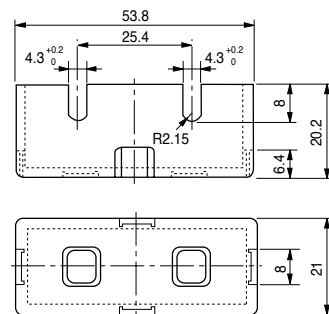
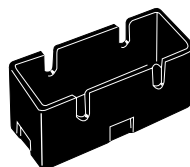
■ Life Curve

● Mechanical life curve

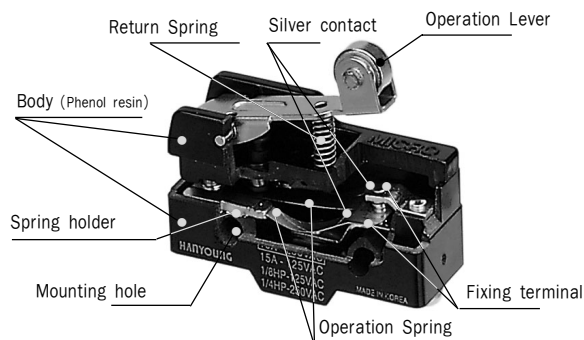


■ Terminal cover

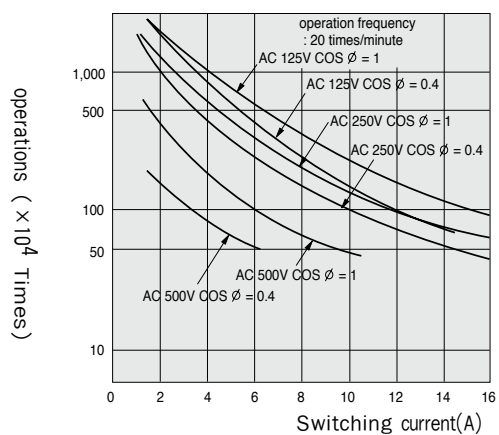
MS-10



■ Construction



● Electrical life curve

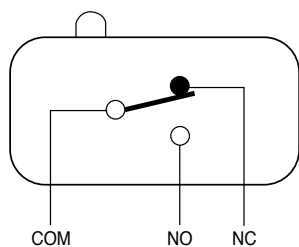


MICRO /LIMIT SWITCH

MICRO SWITCH

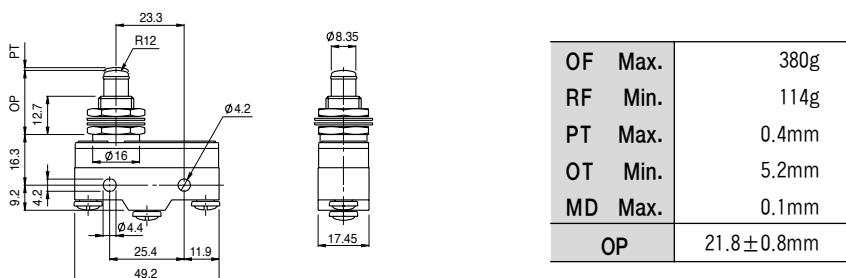


Diagram

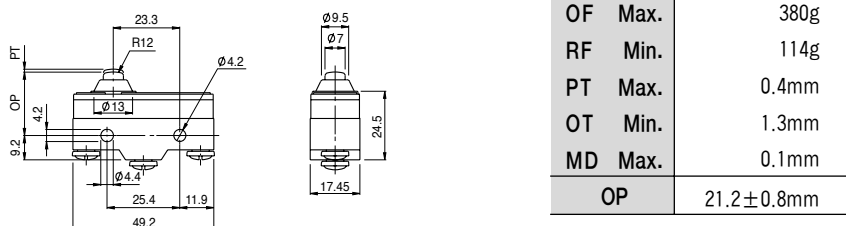


Dimension

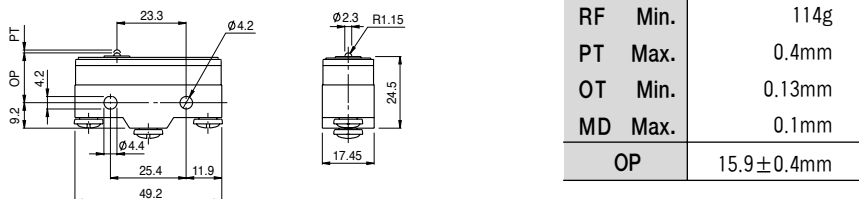
Long button
HY-P701A (Z4G1P05B)



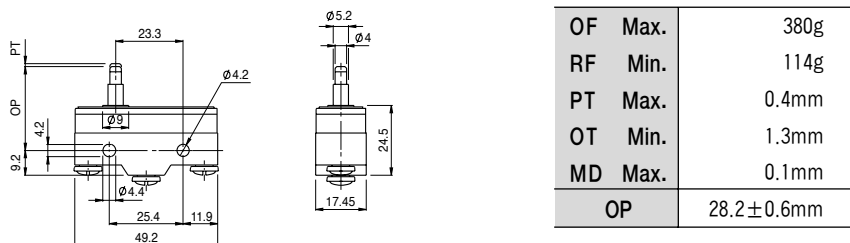
Short button
HY-P701B (Z4G1P09B)



Pin button
HY-P701C (Z4G1P03B)



Push button
HY-P701D (Z4G1P03B)



MICRO /LIMIT SWITCH

18

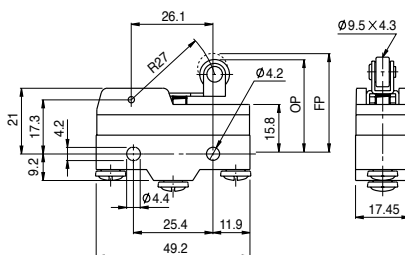
MICRO /LIMIT SWITCH



HANYOUNG

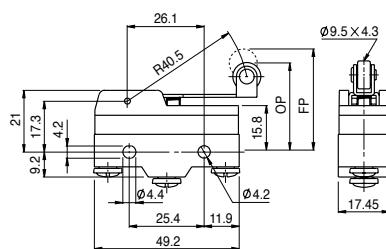
MICRO SWITCH

Short roller lever
HY-R704A (Z4G1L07B)



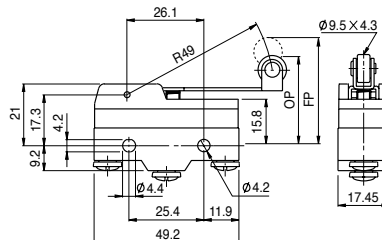
OF	Max.	160g
RF	Min.	40g
PT	Max.	2.7mm
OT	Min.	2.4mm
MD	Max.	0.5mm
FP	Max.	32mm
OP		30.2±0.4mm

Middle roller lever
HY-R704B



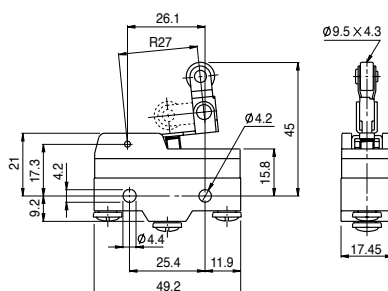
OF	Max.	120g
RF	Min.	56g
PT	Max.	5.5mm
OT	Min.	4mm
MD	Max.	0.7mm
FP	Max.	35mm
OP		30.5±0.4mm

Long roller lever
HY-R704C (Z4G1L03B)



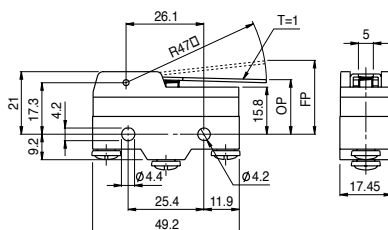
OF	Max.	86g
RF	Min.	22g
PT	Max.	7.1mm
OT	Min.	4mm
MD	Max.	0.9mm
FP	Max.	36mm
OP		30.2±0.8mm

Double roller lever
HY-R704-2W



OF	Max.	160g
RF	Min.	40g
PT	Max.	2.7mm
OT	Min.	2.4mm
MD	Max.	0.5mm
FP	Max.	45mm
OP		43.2±0.4mm

Short lever
HY-L707A



OF	Max.	95g
RF	Min.	25g
PT	Max.	6mm
OT	Min.	4mm
MD	Max.	2mm
FP	Max.	24.8mm
OP		18.4±0.8mm

MICRO /LIMIT SWITCH

