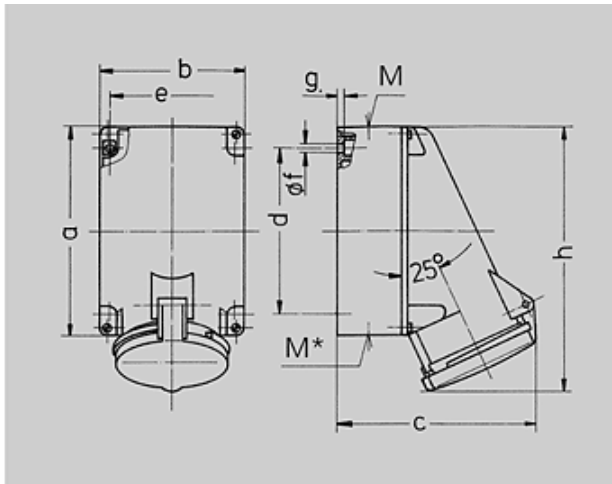




N° de Ref. : 1141A

**Base**

Fijación interior, una entrada de cable superior y dos ciegas (para cortar) inferiores, parte inferior de la carcasa giratoria 180°, preparada para 6 bornes de conexión AM



Plano 1 MB 213	Amp. Polos	63			
		3	4	5	
Dim. en mm	a	170	170	170	
	b	118	118	118	
	c	164	164	164	
	d	134,5	134,5	134,5	
	e	103	103	103	
	f	6,1	6,1	6,1	
	g	6	6	6	
	h	216	216	216	
	M	40	40	40	
	M*		2x M 40		
	Diám. máx. de cable (mm)		(ciega) para cortar		
	Borna para cond. Sección Transvers. (mm <sup>2</sup> ) min.-máx.		32	32	32
			6	6	6
		-25	-25	-25	

 Grupo de artículos : **1041**

voltages : 400V

rated current : 63A

pole : 4 pole







IP protection types : IP44

position of ground contact : 6h

packing unit : 0010

Peso : 880 g

N° DE REF.

V	110V	230V	400V	500V	>50-500V	
Hz	50,60	50,60	50,60	50,60	100-300	300-500
Color código						
Amperios						
<b>63 A</b>	3	1136A	1137A			
	4	1140A	1141A	1142A		
	5		1145A			